



> DESCRIPTION:

Place: Sant Boi de Llobregat

Region: Baix Llobregat

Capacity (min): 14

Capacity (max): 36

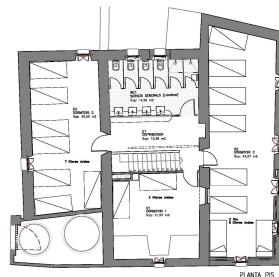
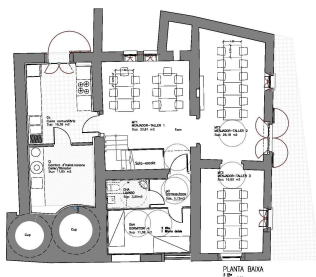
Located in Montbaig-Montpedrós, in the meridian foothills of the Coastal Catalan mountain range, where the mountain ranges of Garraf and Ordal fall to the Llobregat deltaic plain. Around the house we can find the summits of Sant Ramon/Montbaig (295 m), Sant Antoni/Montpedrós (357 m) and el Turó del Tabor (356 m).

Can Palós is located in the Can Soler stream basin, the only stream of Sant Boi that's still not piped, and serves a noticeable function of the recharging the Llobregat plain's aquifer.

Built between XVII and XVIII centuries, the property has a replanted vineyard, and is surrounded by Aleppo pine and oak Mediterranean woods, with areas of scrub and fruit trees plantations (cherry trees particularly).

Can Palós is in the «Anell Verd» (Green Ring), route for pedestrians and for cyclists, that links spaces with scenic and cultural interests (like the river Park, the Sant Ramon mountain, the Roman Thermae, the Colònia Güell crypt or the Benviure Tower).

> FEATURES:





> FEATURES::

ROOMS:

Ground floor:

Room 1: with 2 bunk beds: capacity 4 people

Adapted bathroom for people with reduced mobility

1st floor:

3 rooms

Room 2: 6 bunk beds and 2 single beds: 14 people

Room 3: 2 bunk beds: 4 people

Room 4: 7 bunk beds: 14 people

* You have to bring your own sheet, cushion cover and sleeping bag. Blankets are provided

FACILITIES:

- Number of toilets: 5
- Showers: 3
- Hot water
- Fridge
- Freezer: 1, domestic
- Gas Cooker: 5 burners
- Extractor hood
- Microwave
- Kitchen utensils
- Dining room
- 3 multi-purpose rooms
- Infirmary
- Heating (with geothermic energy)
- Playing area: in the house plot
- Bath area: municipal swimming pools
- Adapted for people with reduced mobility

ENVIRONMENTAL FACILITIES:

- Heating (with geothermic energy)
- LED lights for energy savings
- Flow water restrictor
- Biological wastewater treatment system

> SERVICES AND PRICES:

Users:

Non-profit civil associations

Schools

Companies



Services:

Workshops
Catering

Calendar:

The whole year, except for 24th June, 25th, 26th and 31st December.

Prices:

See the pdf with price list. A deposit must be paid.

Regulations:

See the pdf with regulations.

> **INTERESTING INFORMATIONS:**

HOW TO GET

Line bus

From Santa Coloma de Cervelló (Cesalpina residential development):

- [Line L76](#) (Av. Compte Berenguer Dalí stop)

Go up to 60 [Llobregat](#) Street, at the crossing with Joan Miró Street, and follow the indications of the "Private car" section.

From Sant Boi:

- [Line SB3](#) ([Acàcies-Pollancre](#)s stop)
- [Line L70](#) Barcelona (Pl. Espanya)-Sant Boi (Ciutat Cooperativa)
- [Line L72](#) Barcelona (Pl. Espanya)-Sant Boi (Ciutat Cooperativa)
- [Line L77](#) Aeroport (T1)-Sant Boi (Centre Salut Mental)

Night Bus

- [Line N13](#) Barcelona (Pl. Catalunya)-Sant Boi (Ciutat Cooperativa)
- [Line N14](#) Castelldefels-Barcelona.

Train

- Ferrocarrils de la Generalitat de Catalunya, line Llobregat – Anoia, stations of Sant Boi (connection to SB3 i N13), Colònia Güell (connection to L76) or Santa Coloma de Cervelló (connection to L76) .

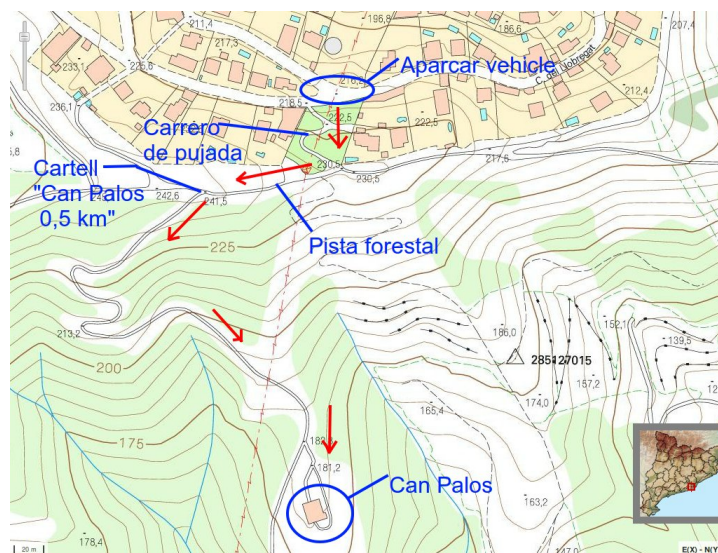
Go to 69 Eucaliptus Street and follow the indications of the «Private car» section.



Private car

From Santa Coloma de Cervelló:

From your origin point, go to Cesalpina residential development of Santa Coloma de Cervelló, leave the car on the intersection of Llobregat Street with Joan Miró Street and begin to walk. Take the little and sloping street that takes you to the «Plaça Can Terrello» forest track. Follow this track to the right and, in 15 meters, you'll find a track with a chain, that descends to Can Palós, with a sign «Can Palós 0,5 km».



From Sant Boi:

From your origin point, go to Eucaliptus Street in Sant Boi. When the street ends, take the forest track -with a chain- in direction to Santa Barbara restaurant. After the restaurant parking, take the next track with a chain. Follow the signs of the «Anell Verd de Sant Boi» that indicate how to arrive to Can Palós.





SERVICES OF THE AREA

- Distance to town: 2 km
- Sant Joan de Déu Health Park (Sant Boi). Tel. 93 661 52 08
- CAP Montclar (Sant Boi). Tel. 93640 05 48 / 93 652 91 16
- CAP Molí Nou (Sant Boi). Tel. 93 6543579
- CAP Vinyets (Sant Boi). Tel. 93 6525013
- CAP Camps Blancs (Sant Boi). Tel. 93 652 91 30
- Baix Llobregat Tourism Consortium
- Llobregat Delta Natural Areas
- Baix Llobregat Agriculture Park
- Sant Ramon church Landscape Interpretation Center

EXCURSIONS

On foot

- Santa Bàrbara del Llor valley. Distance: 4,52 km. Difficulty: moderate
- Montpedró Summit. Distance: 2,89 km. Difficulty: moderate
- Montbaig summit-Sant Ramon church. Distance: 3,55 km. Difficulty: moderate
- Tàbor summit. Distance: 2,68 km. Difficulty: moderate
- Montbaig Route of Dry Stone (circular). Distance: 4,15 km. Difficulty: moderate
- Sant Boi Green Ring (circular). Distance: 18 km. Difficulty: moderate
- Colònia Güell. Distance : 3,94 km. Difficulty: easy
- Roca Negra race. Distance: 24,57 km. Difficulty: moderate

By bike

- Sant Boi Green Ring (circular). Distance: 16, 13 km. Difficulty: moderate
- Llobregat Delta occidental sector: Castelldefels-Sant Boi. Distance : 36 km. Difficulty: easy
- Llobregat Green Route (circular). Distance: 63,02 km. Difficulty: easy
- Llobregat Delta beaches

NATURALS AREAS

Parc Agrari del Baix Llobregat, Parc del Garraf (Natura 2000 Network, PEIN), Serra de Collserola (Parc Natural, Natura 2000 Network, PEIN), Delta del Llobregat (Reserva Natural Parcial, Natura 2000 Network, PEIN).